

Security gas hoses are determined to connect to the fitting type 657 or UK. By their construction they secure easy, quick and safety connection and disconnection from the gas appliance.

The fitting serves as the seal of gas, thus it is not necessary to use another gas seal as by the hoses with the threaded terminals.

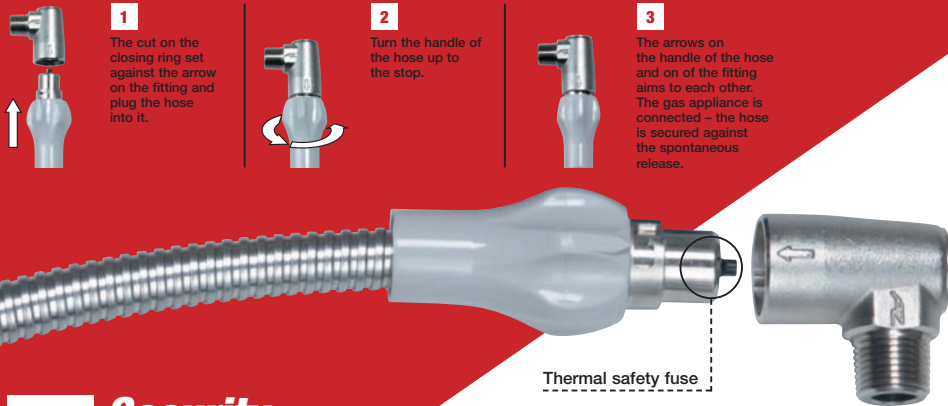
### Terminals

One terminal is always normalized connection plug with a turning handle for connection and operating of the security fitting. Another terminal is threaded.

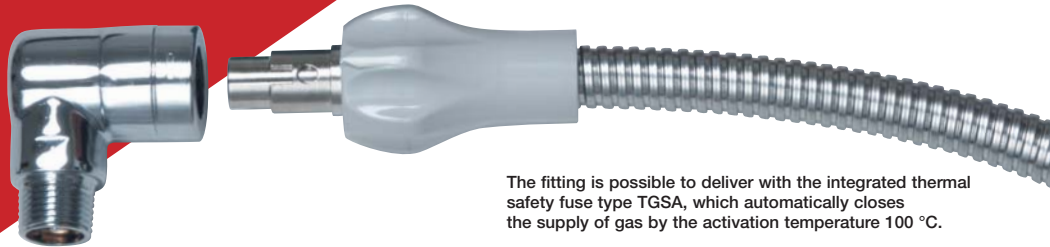
**AZ FLOWTECH**

## **B** Security gas hoses to the fitting type UK

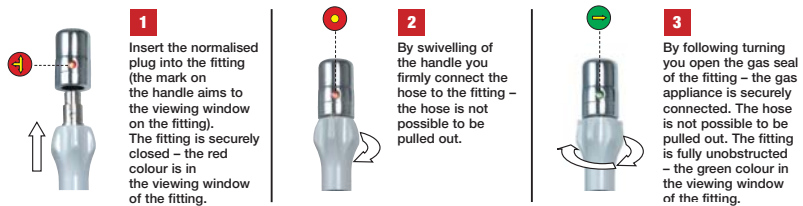
There is an integrated thermal fuse in the normalized connection plug, which significantly increased the security of the connection in case of fire. The fitting automatically closes the the valve placed in the fitting by the exceeding the activation temperature 175 °C.



## **C** Security gas hoses to the fitting type 657



The fitting is possible to deliver with the integrated thermal safety fuse type TGSA, which automatically closes the supply of gas by the activation temperature 100 °C.



AZ-Flowtech Limited  
Unit 5, Queen Street Trading Estate,  
Goldborne, Warrington, Cheshire WA3 3AF  
tel.: +44 1942 272272, fax: +44 1942 272271  
e-mail: info@az-flowtech.com, www.az-flowtech.com

**AZ FLOWTECH**



**Security gas hoses**

# Security gas hoses

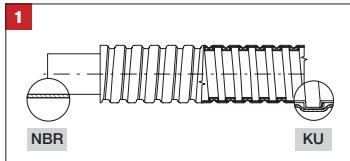
## Use

Security gas hoses are designed for the transport of heating gases between the gas appliance and the connecting gas fitting of the gas conduit.

## Description

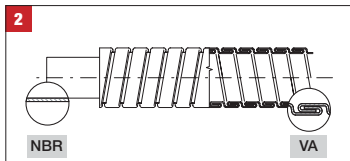
Connecting gas hose consist of:

- internal hose (conducts the medium)
- protecting external hose (secures the internal hose against the damage),
- two terminals



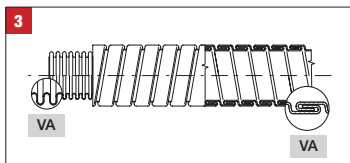
### Variant NBR/KU

internal hose: NBR – rubber  
protecting hose: KU – galvanized steel + PVC



### Variant NBR/VA

internal hose: NBR – rubber  
protecting hose: VA – stainless steel



### Variant VA/VA

internal hose: VA – stainless steel  
protecting hose: VA – stainless steel

## Operating temperature

hose VA/VA: –20 up to +200 °C  
other types: –10 up to +100 °C

## Variants of internal and external hose

1



2



3



## Technical details

Operating pressure: max. 10 kPa  
Dimension: DN 10  
Transported mediums: gas classes 1., 2. and 3. according the norm EN 437:1996 (natural gas, coal gas, propane-butane) (on the demand it is possible to deliver the hose in the non-standard length)  
Standard length: 500, 800, 1000, 1250, 1500 mm

## A Gas hoses with threaded terminals

### Gas hoses can be fitted with:



Ending at least of one side has to be provided by the union nut (G or GW).

## Our tip

### Security ball valves



For the connection of gas hoses with terminals we recommend security gas ball valves type VAI, VAT or VAIT with the integrated excess flow or thermal safety fuse, eventually with both of them. These valves in the angle or the straight version secure the **absolute security** of your household.



#### Ball valve VAIT

- securing „push & turn“ against the accidental opening
- securing by the excess flow fuse against the blast in case of dislocation in the circuit
- securing by the thermal safety fuse against the blast of gas in case of fire



#### Ball valve VAT

- securing „push & turn“ against the accidental opening
- securing by the thermal safety fuse against the blast of gas in case of fire



#### Ball valve VAI

- securing „push & turn“ against the accidental opening
- securing by the excess flow fuse against the blast in case of dislocation in the circuit

